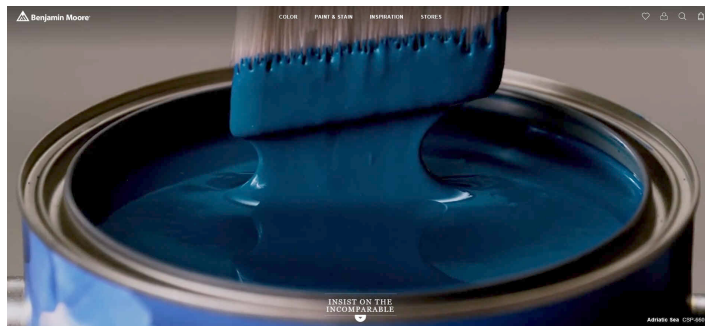


Benjamin Moore & Co. Moore's COLOR_x® System Release Notes & Installation Guide Version 6.37.0000



This new COLOR_x release contains the following changes to COLOR_x

Dual Tint Products

The products listed below are now available to be tinted in Gennex or Color Preview colorants

Insl-X Tuffcete (CST21 & CCST21)

Insl-X Hot Trax (HTF)

See page 2 for the details

National Accounts Colors Added

Colors for: Anne Taylor, The Shade Store, Bed, Bath, & Beyond, The Little Gym, Holiday Inn Times Square, KFC-LPG, Soma, White House Black Market, Chino's

Benjamin Moore Prescriptions

Updated Benjamin Moore prescriptions

For the complete list of updated prescriptions, see page 4.

Reminder

Locating Insl-X Cabinet Coat and Coronado Colors in COLOR_x

When looking up Cabinet Coat or Coronado colors, be sure to choose the proper company - Insl-X or Coronado Paints in the "Select Company" field and then search for the color you wish to look up.

Quick Color Search

Enter Color Number or Name:

Select Product Code:

Select Company: ☐ Search All Insl-X

Search Options: Color Name starts with...

Quick Color Search

Enter Color Number or Name:

Select Product Code:

Select Company: ☐ Search All Coronado Paints

Search Options: Color Name starts with...

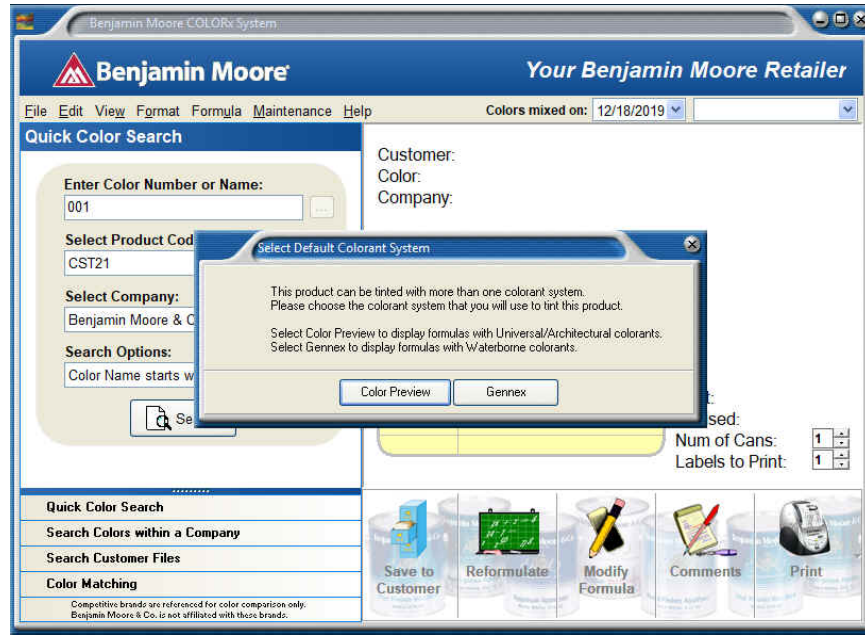
Select Insl-X or Coronado Paints in the "Select Company" field.

Using Dual Tint Products (Gennex or Color Preview colorants)

InsI-X Tuffcrete, / Compliant Tuffcrete and InsI-X Hot Trax can be tinted with Color Preview or Gennex colorants.

COLORx will give you the proper prescriptions and custom formulas for the system you choose.

When you look up a prescription or perform a custom match for the first time in Tuffcrete CST21/CCST21 or Hot Trax HTF, you will be prompted to choose which colorant system you want to use, as shown below.

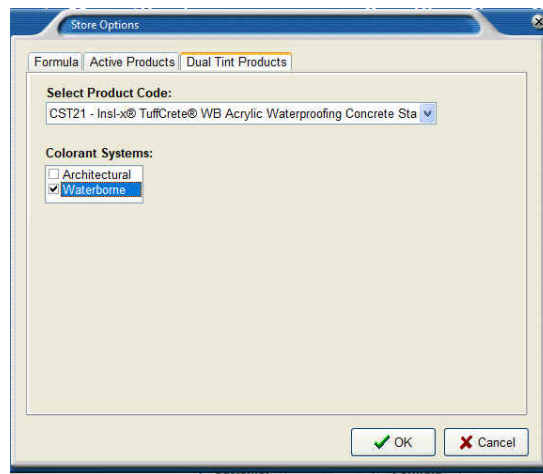


Click on the button (Color Preview or Gennex) to choose which system to use.

When you choose the colorant system for the product, you will no longer be prompted to choose when looking up colors in that product again.

However, you will be able to change the colorant system to use if you wish to.

Simply choose the **File** dropdown on the main COLORx menu and choose **Modify Store Options**. Then click on the **Dual Tint Products** tab as shown below. Select the **Select Product Code** dropdown to choose the colorant system.



Now check the colorant system you wish to activate, and then uncheck the other system. Now click on OK. You will not be prompted to choose the colorant system when you look up colors or do custom matching matches in that product

COLORx Help

While in the COLOR_x application, you can view the Operator's Manual and the Quick Start Guide by clicking on Help, then choose COLOR_x Help for the manual or COLOR_x Quick Start.

Best Practices for Custom Color Matching and Competitive Company Colors

Always save and store custom matched color formulas and competitive company formulas made for your customers in the Customer File database in COLOR_x. This will assure that you have the exact formula that the customer previously purchased.

We routinely update our calibration database files to improve our color matching capabilities, which may alter the original formula.

Following this procedure will allow the customer to purchase the same formula in the event that they return to purchase more of this color for touch up.

Competitive Color Prescriptions

We have amassed an extensive collection of colors from competitor's color merchandise. This information is available in our Color Search option in COLOR_x. To see if a color exists, simply follow the same procedure you would for a Benjamin Moore color. Enter a color number or name, along with a product, and either select an individual company or check the "Search All" box above the "Select Company" drop down list. (See the Operator's Manual for more details.)

Unlike a Benjamin Moore color that displays a prescription created and approved by our Color Prescribing Lab, we store the measurement of the competitive color. The measurement is calculated in our color matching application to generate a color prescription the same as if you measured a custom color with a spectrophotometer.

When a customer requests a match to a competitive color, you should follow this procedure. First, look up the color in COLOR_x and determine if we have it in our system. If it is, a prescription will be calculated and displayed. Click on the button "Closest BM Color", this will list the five closest Benjamin Moore colors. Suggest to the customer that they look at our closest colors and see if that meets their color requirements. This has two benefits. If the color is acceptable, then you have a tested Benjamin Moore prescription to make the color and you have changed a competitive color specification to a Benjamin Moore color specification.

Second, if you or the customer has a sample of the competitive color merchandise then match the color merchandise just as you would match a custom color. Since the customer will be judging the color to the merchandise sample that should be your target. Depending on the age and condition of the merchandise, it may not represent what we have stored in COLOR_x.

Finally, if the customer does not like our closest color and no sample of the color is available then use the calculated match in COLOR_x.

If you have any questions, please contact our Color Technology Representatives by calling 800-809-9213.

Prescription Changes since ColoRx Version 6.36.0000

United States

The following prescriptions have been modified for multiple products: 248, 1608, 2065-10, HC-29. Please refer to the revision date when calling up prescriptions for these colors. A revision date after 9/14/19 indicates a change in the prescription since ColoRx version 6.36.0000.

The following products have been modified for multiple prescriptions: 127, 487, 640, W626, CST21, HTF. Please refer to the revision date when calling up prescriptions for these products. A revision date after 9/14/19 indicates a change in the prescription since ColoRx version 6.36.0000.

The following prescription has been modified for product 13: 2011-20.

The following prescriptions have been modified for product 524: 2022-20, 2022-30, 2151-60, 2166-40, CSP-95, CSP-575, CSP-690, CSP-830, CW-100, CW-395.

The following prescriptions have been modified for product 549: 709, 2112-50, HC-146, HC-170.

The following prescriptions have been modified for product 639: 1619, 2141-40, 2142-40.

The following prescription has been modified for product CC55: 1617.

The following prescription has been modified for product CC56: 1617.

The following prescription has been modified for product N400: 84.

The following prescriptions have been modified for product N536: 21, 76, 91, 126.

The following prescriptions have been modified for product V341: OC-149, PM-3.

Canada

The following prescriptions have been modified for multiple products: 248, 1608, 2065-10, HC-29. Please refer to the revision date when calling up prescriptions for these colors. A revision date after 9/14/19 indicates a change in the prescription since ColoRx version 6.36.0000.

The following products have been modified for multiple prescriptions: CST21, K127, K487, K626, K640. Please refer to the revision date when calling up prescriptions for these products. A revision date after 9/14/19 indicates a change in the prescription since ColoRx version 6.36.0000.

The following prescription has been modified for product 13: 2011-20.

The following prescription has been modified for product CC55: 1617.

The following prescription has been modified for product K400: 84.

The following prescriptions have been modified for product K524: 2022-20, 2022-30, 2151-60, 2166-40, CSP-95, CSP-575, CSP-690, CSP-830, CW-100, CW-395.

The following prescriptions have been modified for product K536: 21, 76, 91, 126.

The following prescriptions have been modified for product K549: 709, 2112-50, HC-146, HC-170.

The following prescriptions have been modified for product K639: 1619, 2141-40, 2142-40.

The following prescriptions have been modified for product V341: CC-20, OC-149, PM-3.

Moore's COLOR_x® System Installation Guide

The Benjamin Moore COLOR_x Prescription Book and Color Matching System programs are incorporated into a single software package. It is available on the Benjamin Moore Retailer Portal, Mybenjaminmoore.com and runs under the Windows® XP service pack 3, Windows® 7, Windows® 8, and Windows® 10 operating systems.

COLOR_x Minimum System Requirements

- Intel Pentium® processor 1 GHz or higher.
- 2 GB of RAM
- 4 GB of free hard disk space.
- Video card capable of supporting 16M colors
- Printer
- Serial or USB port for spectrophotometer & barcode reader
- Windows® XP service pack 3, Windows® Vista, Windows® 7, Windows® 8 or Windows® 10

X-Rite MetaVue Spectrophotometer Minimum System Requirements

- Windows 7 SP1 (32 or 64 bit)
- Windows 8/8.1 (32 or 64 bit)
- Windows 10 (32 or 64 bit)

Windows XP and Vista are not supported for the new MetaVue Spectrophotometer

Installation

If you are downloading COLOR_x from the Benjamin Moore Retailer Portal, mybenjaminmoore.com, read the "COLOR_x Download Instructions." This will instruct you on how to download and install COLOR_x on your computer.

If you don't have internet access on the computer running COLOR_x, you can download the COLOR_x installation file directly to a flash drive from another computer which has internet access.

To install COLOR_x from a flash drive, be sure that there are no other applications running. They should be closed before attempting to install the program. If your system has any automatic virus detection software enabled, it should be disabled before installing.

Insert the flash drive into a USB port. Open Windows Explorer and click on the flash drive letter. Now click on the ColoRx6xxxxxx.exe file.

The installation procedure will automatically start and bring you to the **Welcome Screen**. The Setup Wizard will guide you through the installation.

License Agreement

As you start the installation, the License Agreement screen appears. Be sure to read this license agreement. If you disagree with the terms of the agreement, then click on the Cancel button to exit the installation. If you agree with the terms, then check the appropriate box to continue the installation. The installation will prompt you to select the software region, United States or Canada. The default is United States.

***Note:** If you have a previous version of COLOR_x® 6, this installation will not write over any stored samples or stored customers. They can still be accessed.*